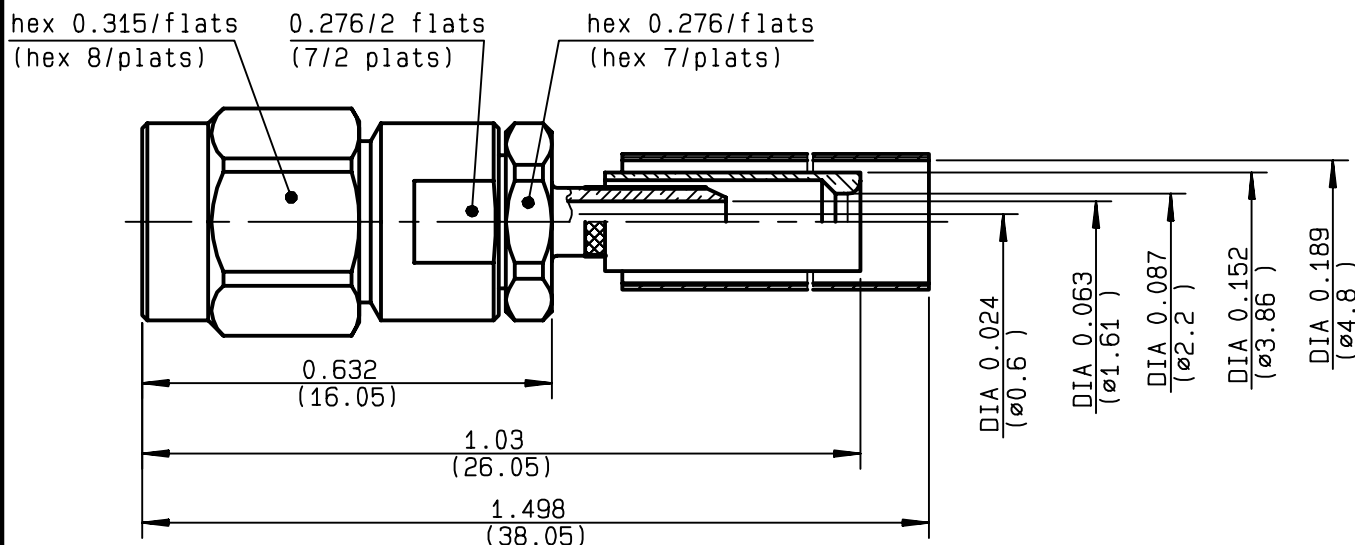


STRAIGHT PLUG CRIMP TYPE
CABLE 2/50 S FILX 50CIS
R125.073.500
SERIES SMA


NOMINAL IMPEDANCE	50	Ω
FREQUENCY RANGE	0-12.4	GHz
TEMPERATURE RATING	-65/+165	$^{\circ}\text{C}$
V.S.W.R	1.20 + .025	$\times F(\text{GHz})\text{Maxi}$
RF INSERTION LOSS	0.06	$\sqrt{F}(\text{GHz}) \text{ dB Maxi}$
VOLTAGE RATING	170	$V_{\text{eff}} \text{ Maxi}$
DIELECTRIC WITHSTANDING VOLTAGE	500	$V_{\text{eff}} \text{ Mini}$
INSULATION RESISTANCE	5000	$M \Omega \text{ Mini}$
HERMETIC SEAL	NA	$\text{Atm.cm}^3/\text{s}$
LEAKAGE (pressurized only)	NA	
MECHANICAL DURABILITY	500	Cycles
WEIGHT	4.74	gr
SPECIFICATION		

CABLES : **50 CIS**

OTHERS CHARACTERISTICS

CABLE RETENTION	45	N Mini
CENTER CONTACT RETENTION		
Axial force - mating end	27	N Mini
Axial force - opposite end	27	N Mini
Torque	NA	cm.N Mini
RECOMMENDED TORQUES		
Mating	110	cm.N
Panel nut	NA	cm.N
Clamp nut	120	cm.N

CONNECTOR PARTS: MATERIALS

BODY	STAINLESS STEEL
OUTER CONTACT	
CENTER CONTACT	BRASS
INSULATOR	PTFE
GASKET	SILICONE RUBBER
OTHERS PIECES	STAINLESS STEEL

FINISH (all values are given in micrometers)

GOLD 0.5 OVER NICKEL 2
GOLD 1.3 OVER NICKEL 2
-
-
GOLD 0.5 OVER NICKEL 2

ISSUE

9840A00

CREATION DATE

28/05/1996

FILE PART-NUMBER

96-1206-104
RADIALL®

The information given here is subject to change without notice.
 Design changes may be in order to improve the product.

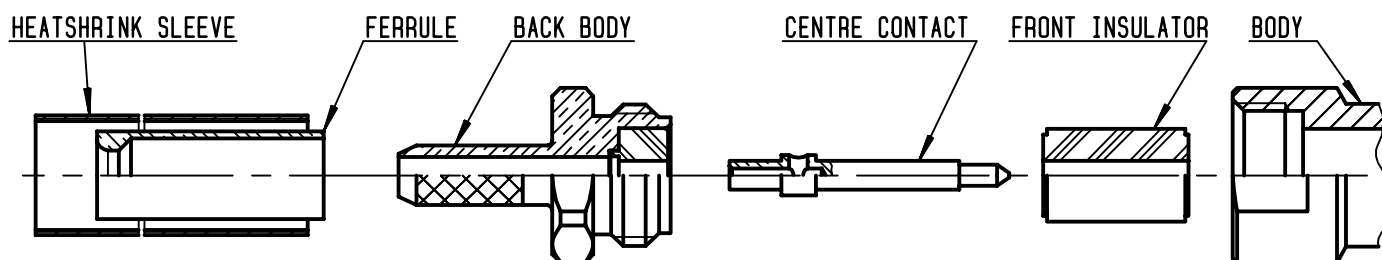
Connect to the future


R125.073.500

ISSUE 9840A00

SERIES

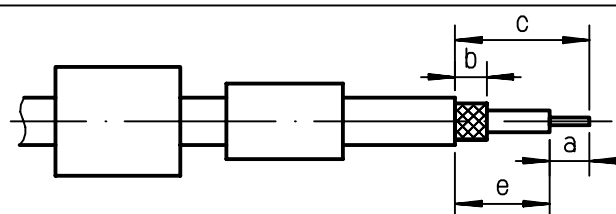
SMA



①

Slide the heatshrink sleeve and the ferrule onto the cable.
Strip the cable.

-
-

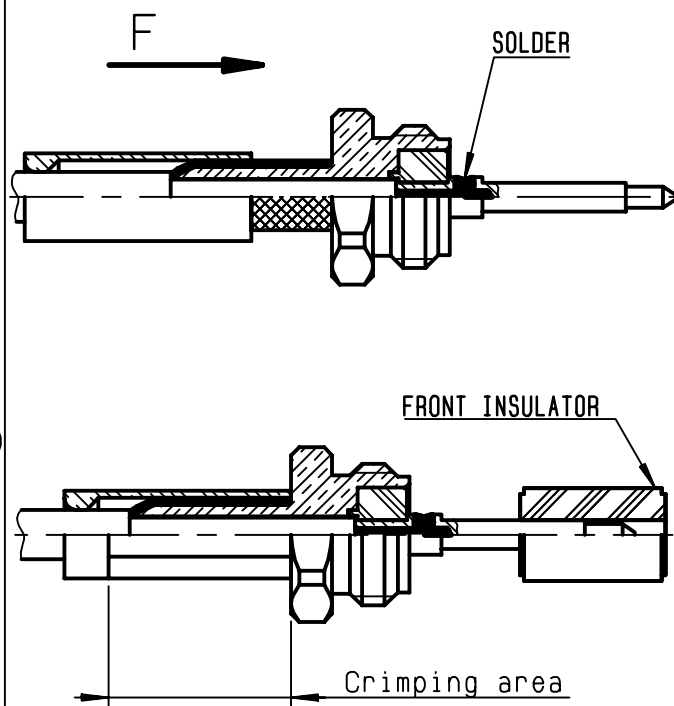


Stripping	a	b	c	d	e
inch	0.138	0.276	0.531	0	0.394
mm	3.5	7	13.5		10

②

Fan the braid .
Slide the back body between dielectric and braid .
Slide on the centre contact until it bottoms against insulator .
Solder centre contact
Slide ferrule over the braid
(in direction F)
Crimp ferrule with crimping tool
R282 211 000 (Hex. : .128) or
crimping tool R282 293 000 (M22520/5-01)
+ dies R282 235 003 (M22520/5-03)
Mount the front insulator.

-
-



④

Screw sub-assembly into the connector body.
(recommended coupling torque: 10.62 in.lb)
Cut the excess of braid.
Slide sleeve over the ferrule and heatshrink in place.

